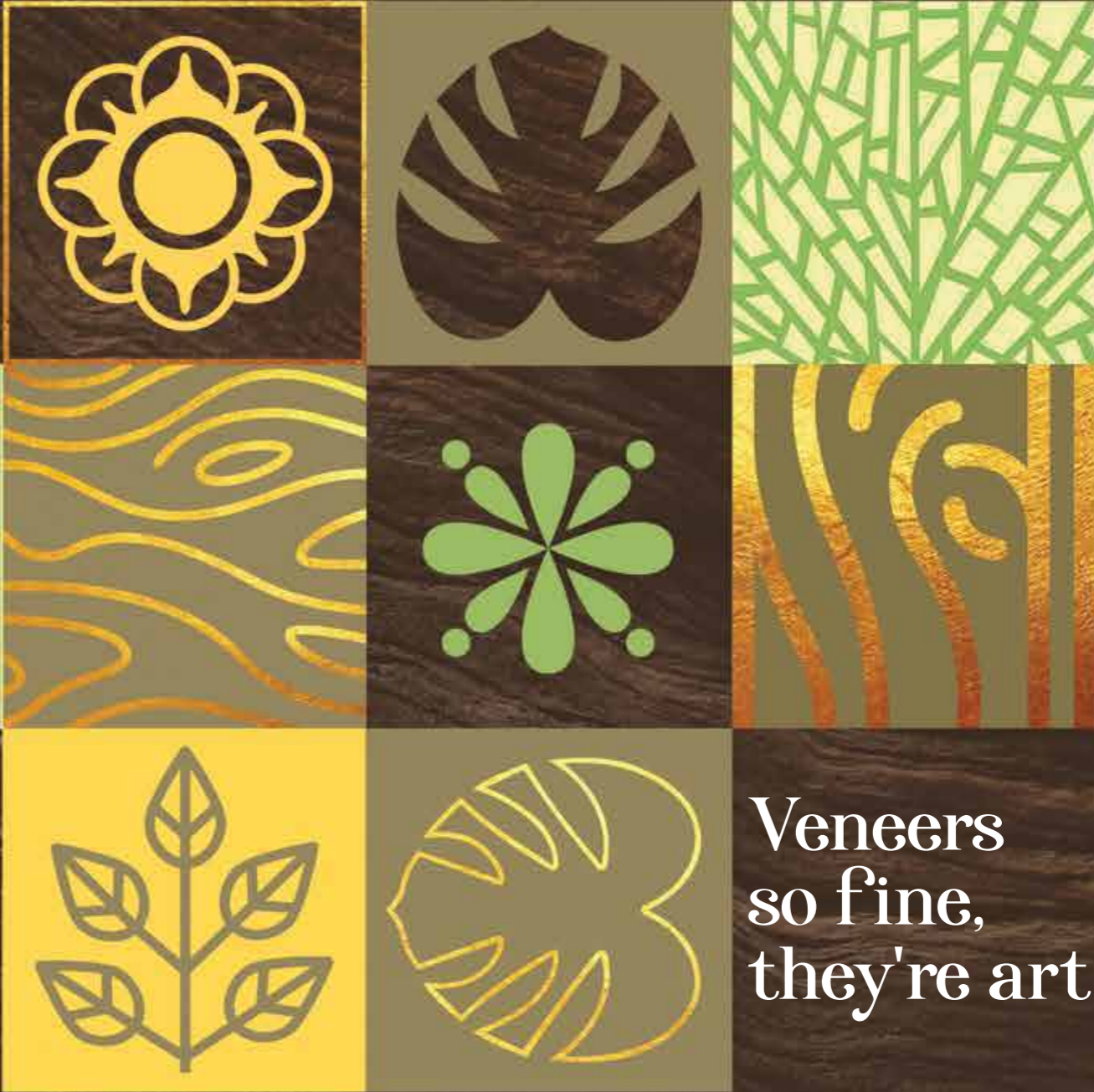
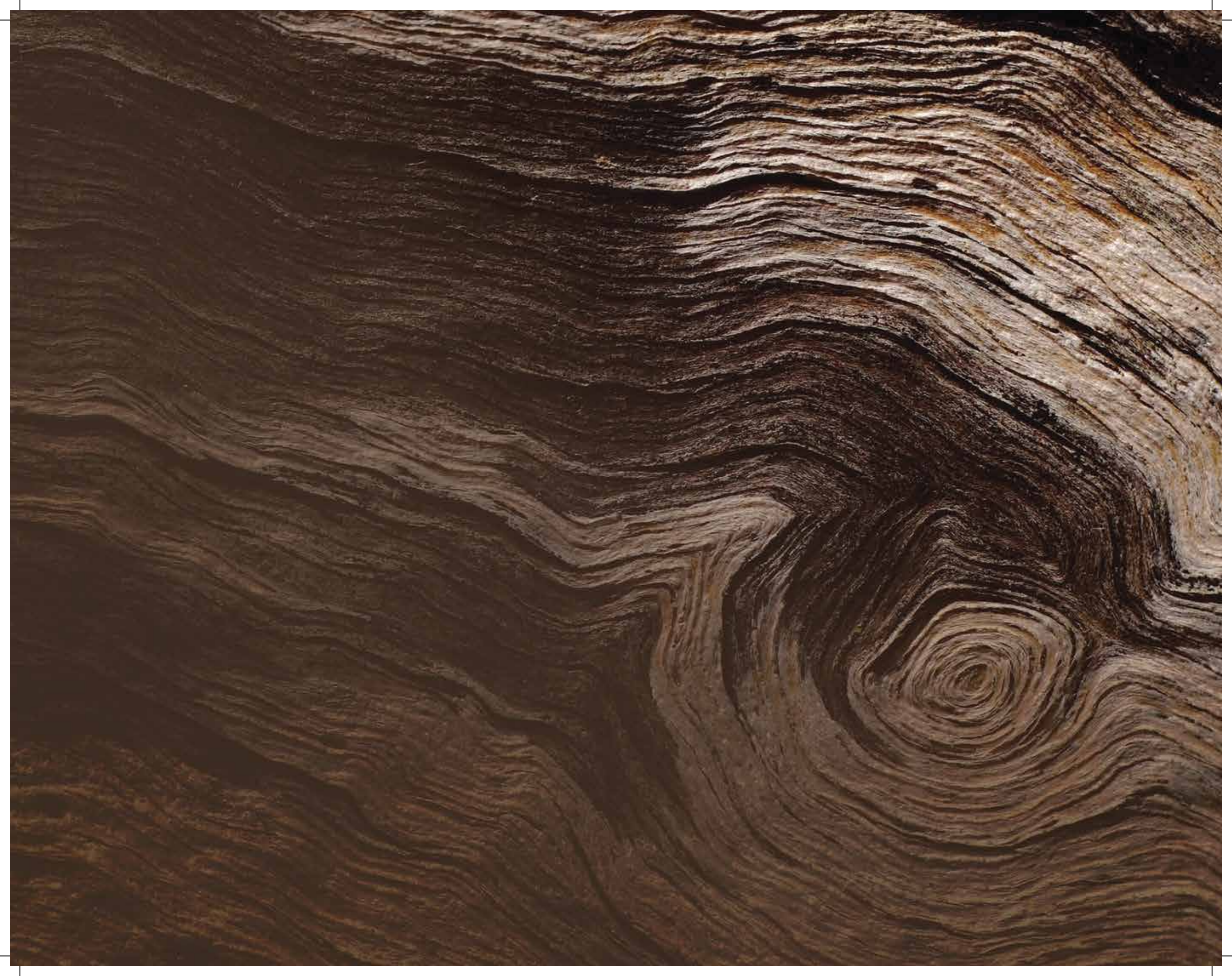


Wood
crests™



Veneers
so fine,
they're art.

Green
Greenply®





As one of India's largest interior infrastructure organisation, Greenply boasts of the largest decorative set up at Rajkot, Gujarat.

We work with over 160 exotic species which are imported from the forests across North & South. America, Europe and Africa. We also offer over 1100+ designs to select from. We work in close partnership with top-of-the-class architects and interior designers and the samples provided herein are the bestsellers out of our produce & inventory.

To experience an exotic array of wood veneers, a visit to our facility at Rajkot is highly recommended. All our veneers are environment & people safe, complying with norms set by FSC, IGBC and are Formaldehyde level: E-1 (as per European Standards) and CE certified.

The unmatched quality and aesthetics of our veneers come in a variety of sizes. One can choose from standard as well as specialised dimension sheets - 4ft x 8ft, 4ft x 10ft, 4ft x 12ft. Our range has been used to bring alive projects in the hospitality sector, residential projects as well as contract building projects.

Does art imitate nature, or is nature an inimitable stretch of art? These are the questions that led to the birth of Wood Crrests. Thus began Greenply's journey of art - the art of veneers.

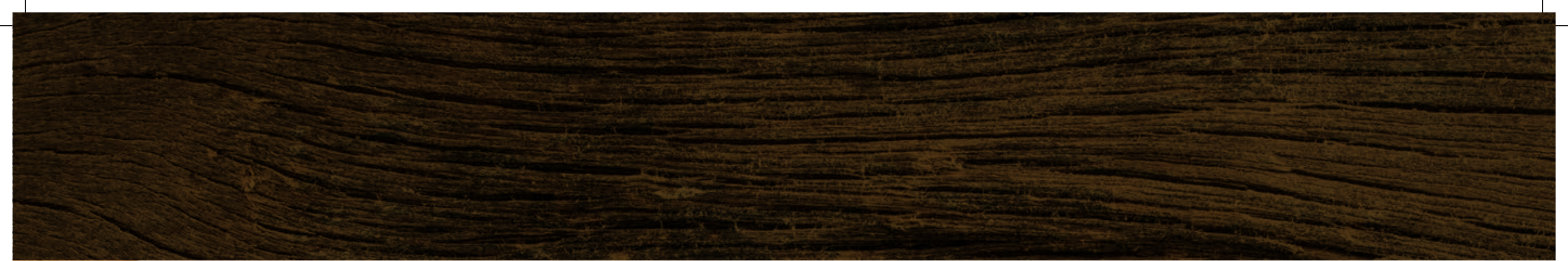
It's time to take a step forward. This time, the art of fine veneers aims to reveal the art hidden in the folds of nature. To that end, Wood Crrests presents a wide range of natural decorative veneers. We invite you to explore their intricate patterns, textures and sheen. Get intimate knowledge of the art of nature.

WoodTM
crrests

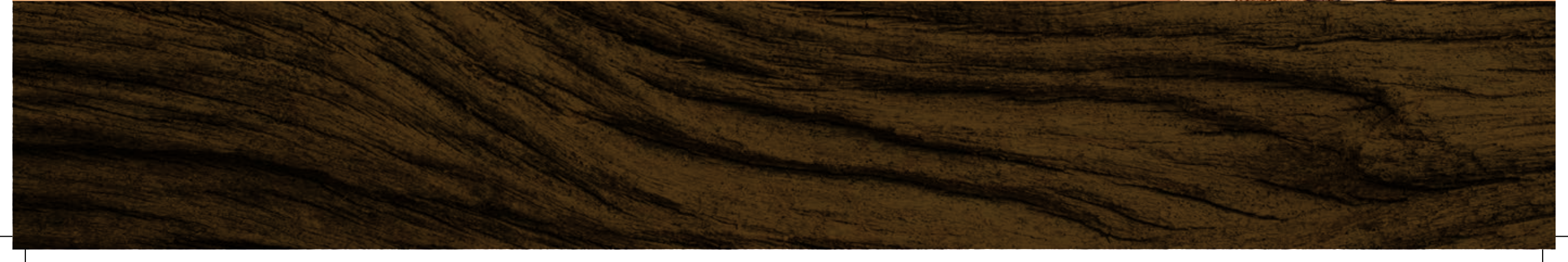
Deco Real

Does art imitate life, or is it the other way around? In case of the wide range of Deco Real natural veneers, art is a slice of nature, extracted with precision and untouched by influences. The timber is left in its idyllic state, giving rise to a texture that sings a paean to unblemished nature.





ZERICOTE





**BIBOLO
(QR)**



**AM CHERRY
(CR/QR)**



**ANIGRE
(QR)**



AROMATIC CEDAR
(CR)



FRAXINUS BURL



BACOTE



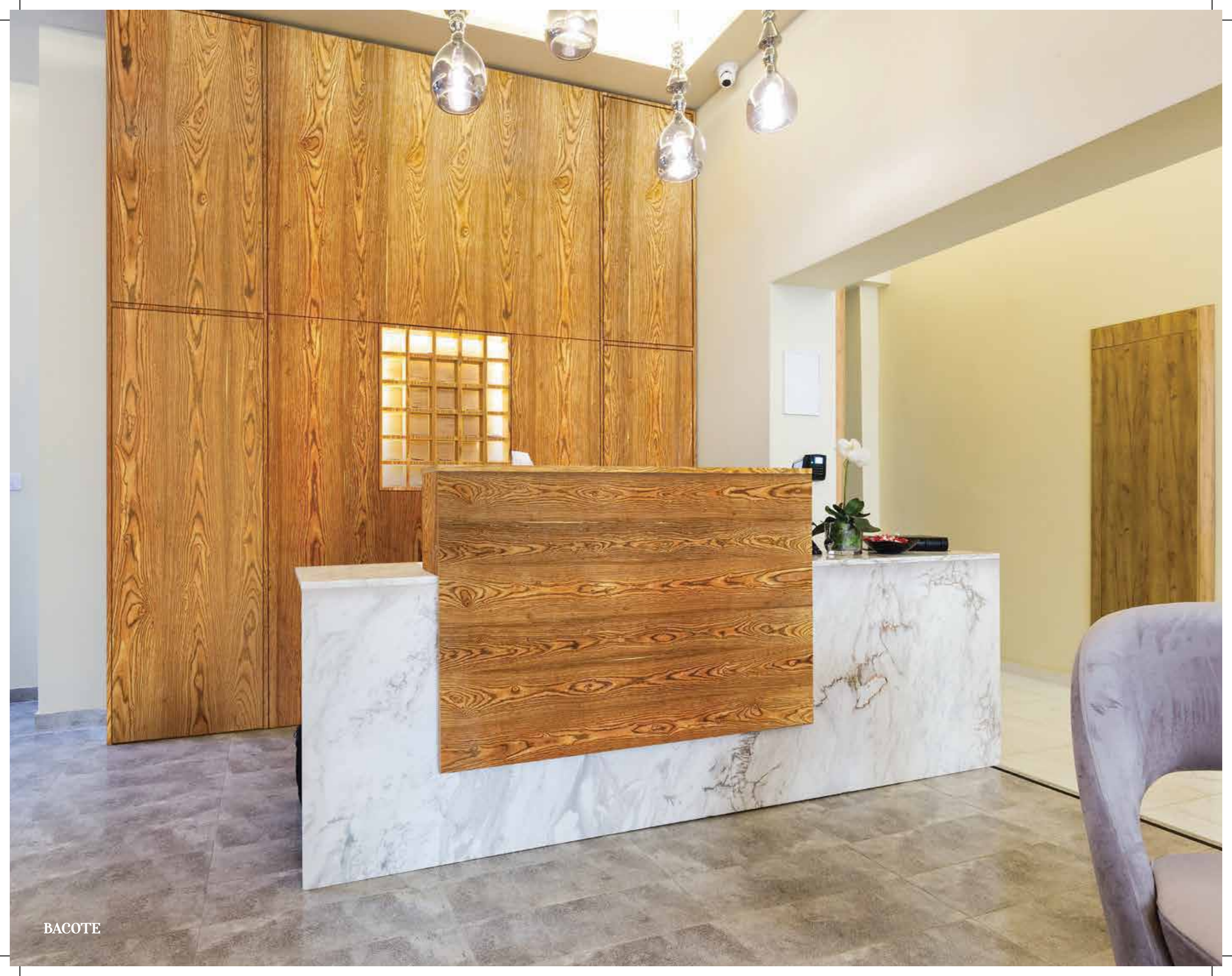
ACER BEM



BOSSE POMMELI



CHEN-CHEN





**CHESTNUT
(CR/QR)**



CURLY & QUILTED MAPLE



EBONY



EUCALYPTUS POMMELI



**EUROPEAN WALNUT
(CR/QR)**



FIGURED ANIGRE



**FIGURED ASH
(CR/QR)**



FIGURED BOSSE



FIGURED CURBIXCIA



FIGURED ETIMOE



FIGURED EUCALYPTUS



FIGURED AFARA



FIGURED BOLIVIAN ASH



FIGURED LAMIO



**FIGURED SYCAMORE
(CR/QR)**



OAK BURL



FIGURED WALNUT



**GOLDEN CEDAR
(CR/QR)**



SILKY CROMA



**GOLDEN TEAK
(CR/QR)**



**ROSEWOOD
(CR/QR)**



**IPE
(CR/QR)**



JATOBA
(CR/QR)



KNOTTY PINE



ANTIQUÉ WALNUT



KOTO



LAURO PRETO



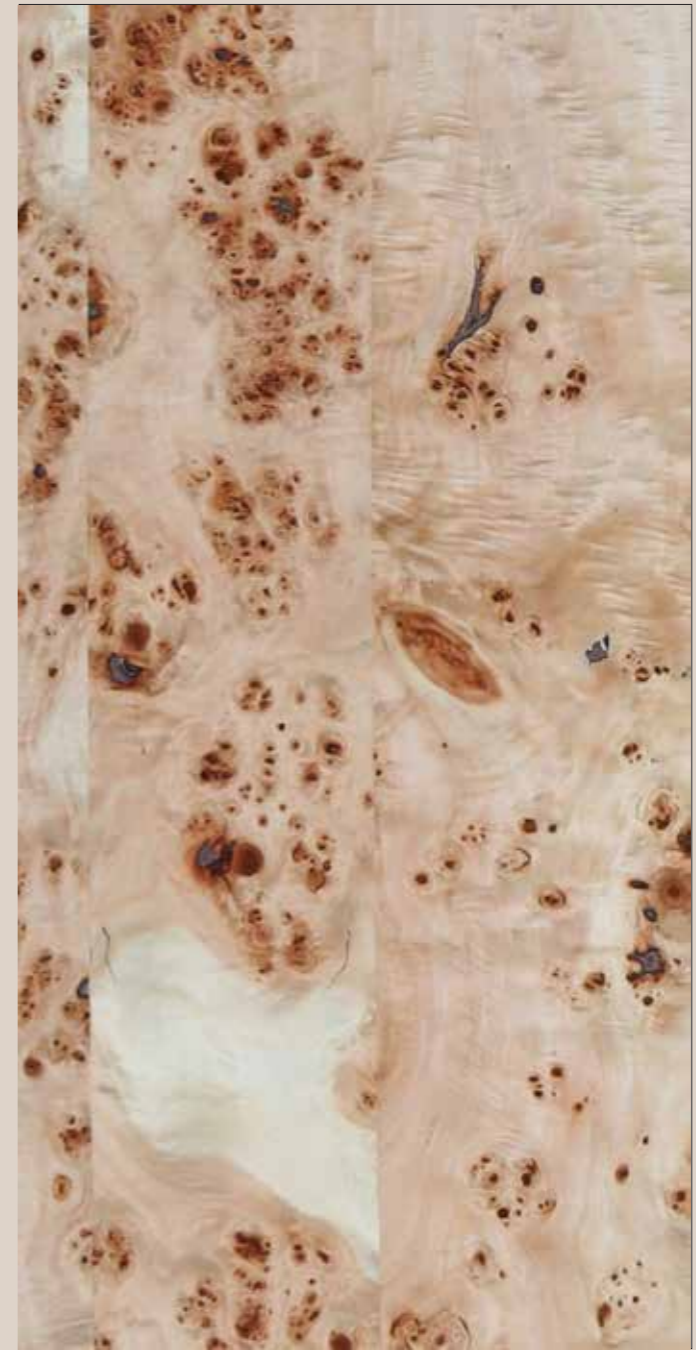
MAHOGANY



MAKORE



MAKORE POMMELI



MAPA BURL



**MAPLE
(CR/QR)**



MOTTLED MAKORE



QUERCUS



OAK BURL



OLIVE ASH
(CR/QR)



OLIVE ASH BURL





ASIAN ASH



WONDER WALNUT



SHEDUA



**DRACON EBONY
(CR/QR)**



**RED CEDAR
(CR/QR)**



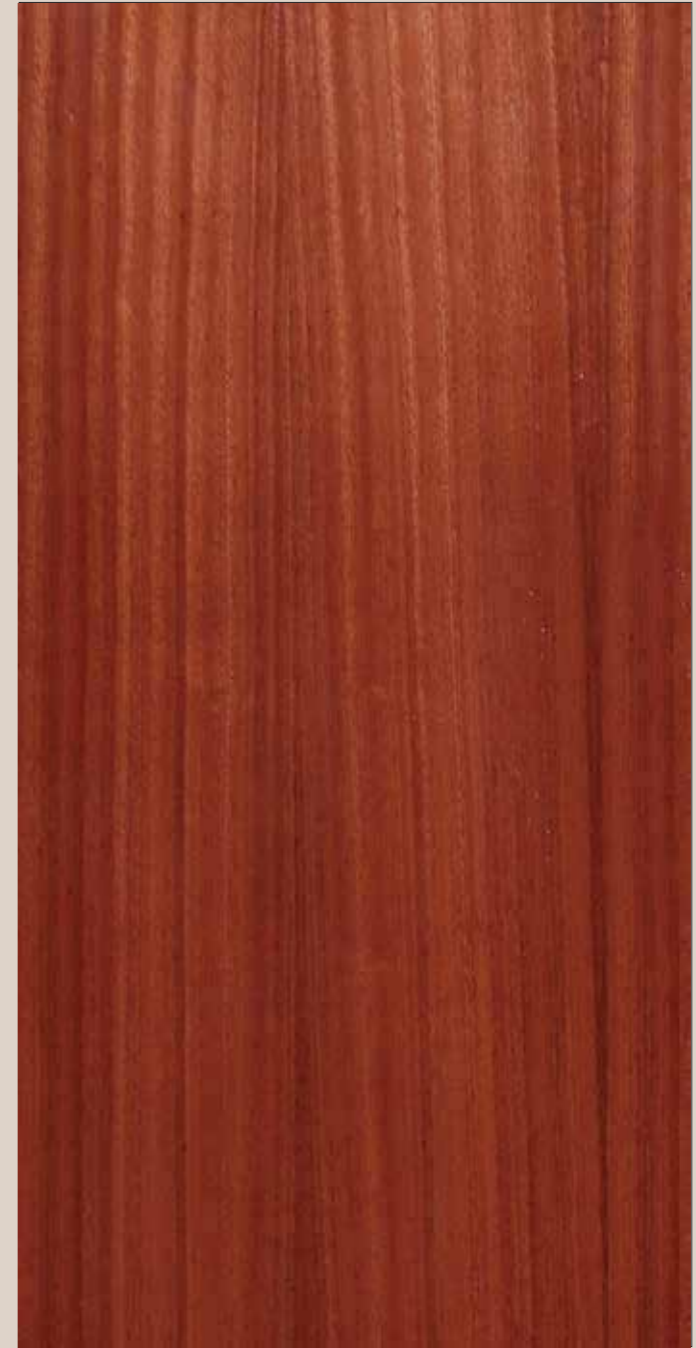
**RED ELM
(CR/QR)**



**RED OAK
(CR/QR)**



SANTOS



**SAPELE
(QR)**



SAPELE POMMELI



SAXIFAGUS



SATIN WALNUT



SANWOOD



SOUTHERN OAK



STEAMED BEECH



SUCUPIRA



SYCAMORE
(CR/QR)



TINEO



**AM TULIP
(CR/QR)**



ANCIENT OAK



**VINTAGE TEAK
(CR/QR)**



LAURO PRETO



AM WALNUT
(CR)



WALNUT ROUGH CUT



WALNUT BURL



**WENGE
(QR)**



**WHITE ASH
(CR/QR)**



WHITE ASH ROUGH CUT



WHITE BEECH



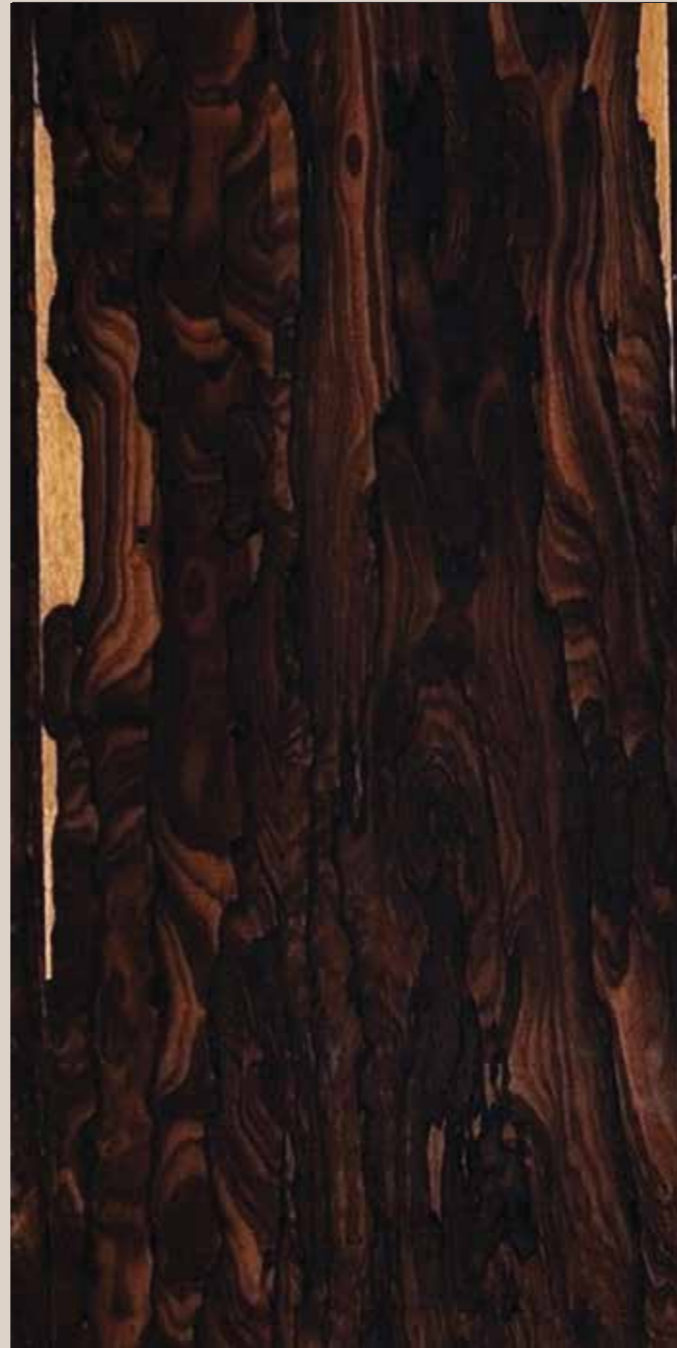
**WHITE OAK
(CR/QR)**



WHITE OAK ROUGH CUT



**ZEBRANO
(CR/QR)**



ZERICOTE



**AM WALNUT
(QR)**



**EUCALYPTUS
(CR)**



**SAPELE
(CR)**



**FIG AMERICAN CHERRY
(CR)**



MOTTLED MAKORE



SAPELI ROUGH CUT



FIGURED BLACK AFARA



GOLDEN TEAK ROUGH CUT



PERSIAN ALBERO

Fumed Nouveau

Art is an exploration of the hidden corners of the unexpected. It is a journey into the measureless depths of novelty - an idea deftly captured by the assortment of Fumed Nouveau veneers. Its naturally dark and smoked appearance is sure to make an appeal to the desire for the new in you.





ROASTED NOCINO



ROASTED WATTLES



ROASTED BIBOLO
(QR)



ROASTED CHERRY BLOSSOM
(CR/QR)



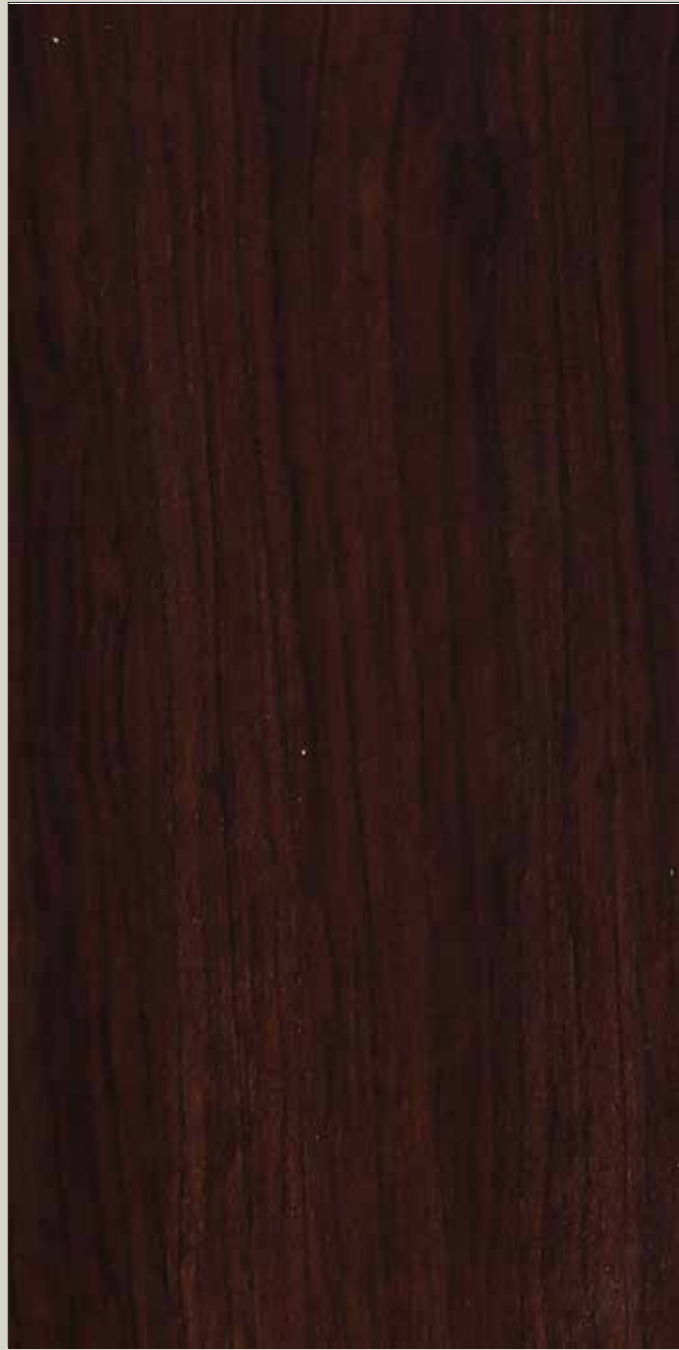
**ROASTED AROMATIC CEDAR
(CR)**



ROASTED FAGUS BOSOM



**ROASTED CHESTNUT
(CR/QR)**



ROASTED CHILLAN ROSEWOOD



ROASTED EBIARA
(CR/QR)



ROASTED EUCALYPTUS
(QR)



ROASTED EUCALYPTUS POMMELI



ROASTED EUCALYPTUS ROUGH CUT
(CR/QR)



ROASTED CLARO WALNUT
(CR/QR)



ROASTED FIGURED BOSSE



ROASTED FIGURED CURBIXCIA



ROASTED FIGURED ETIMOE



ROASTED FIGURED EUCALYPTUS



ROASTED FIGURED AFARA



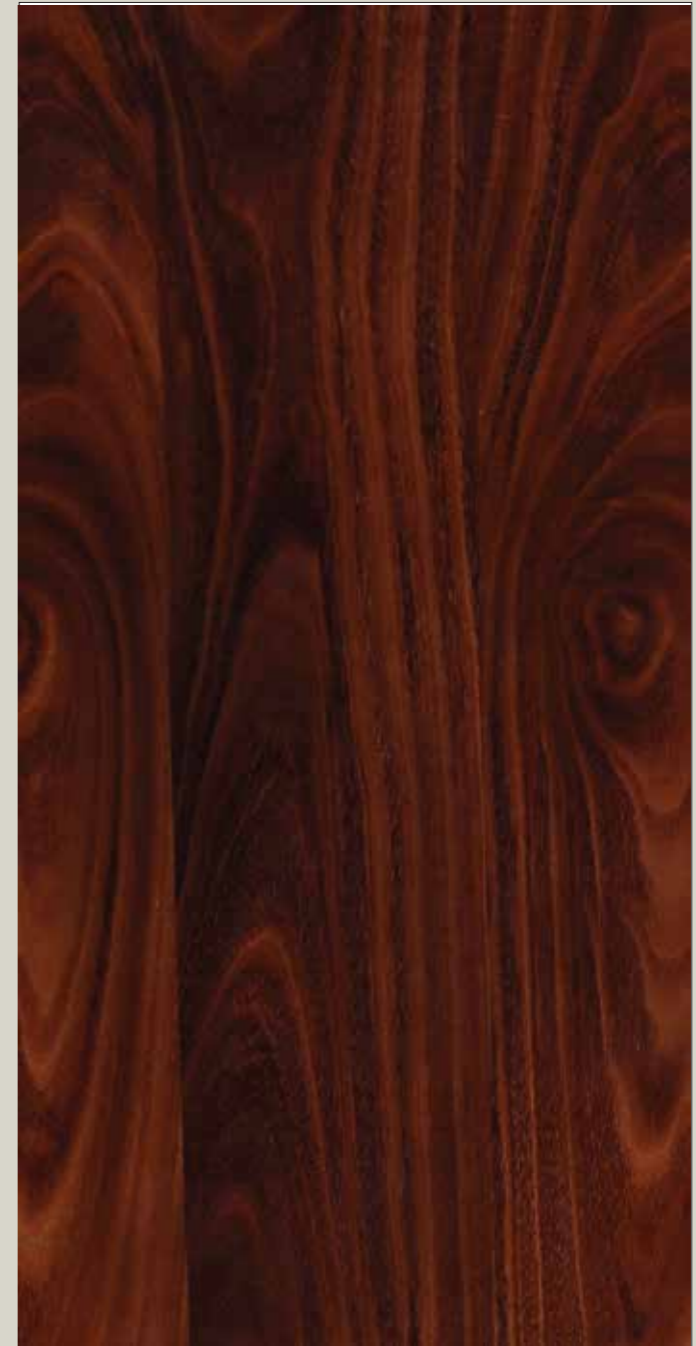
ROASTED FIGURED SHEDUA



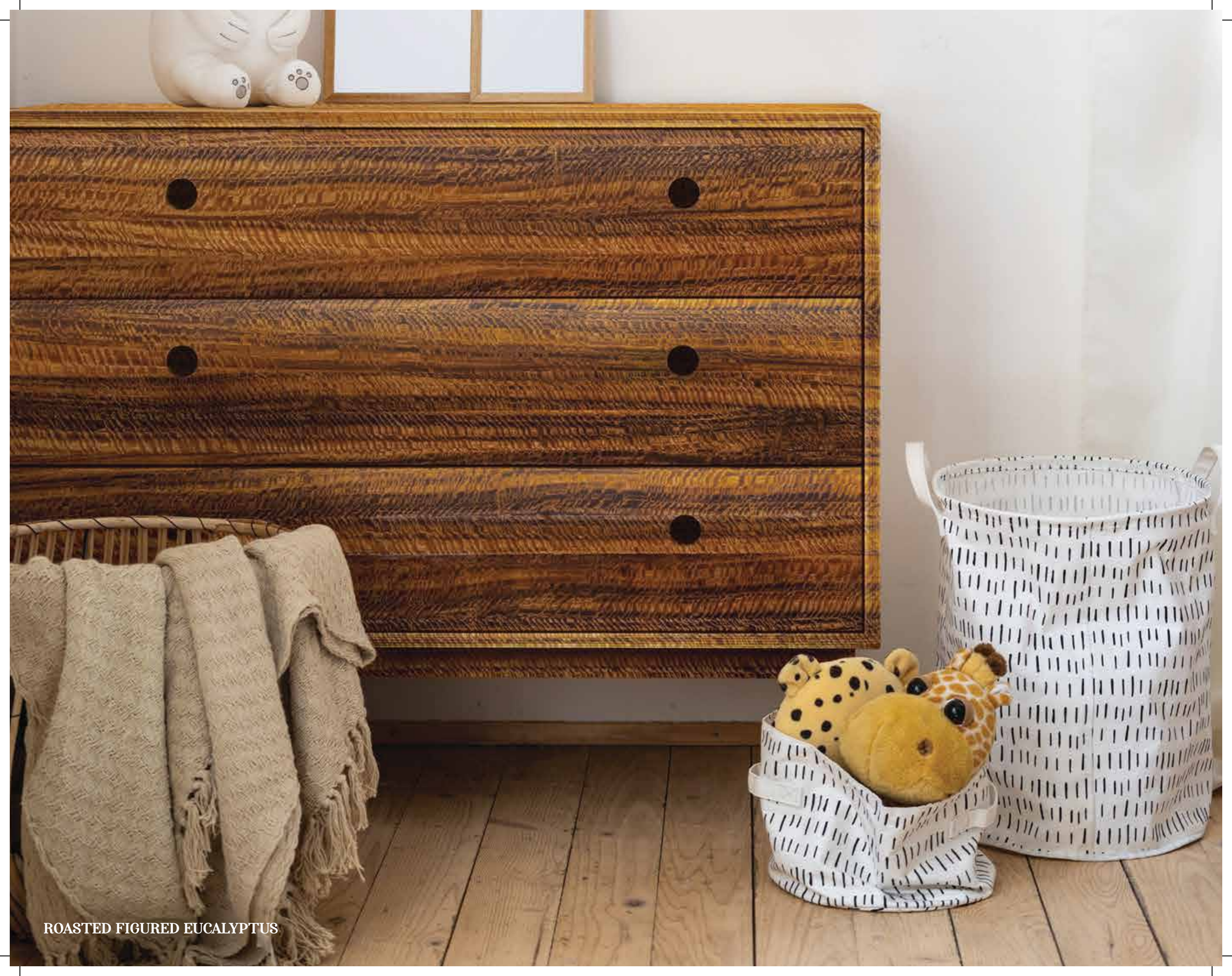
ROASTED FIGURED LAMIO



ROASTED GOOFY OAK



ROASTED BURBERRY
(CR/QR)



ROASTED FIGURED EUCALYPTUS



ROASTED GRISSAD



ROASTED SILKY CROMA



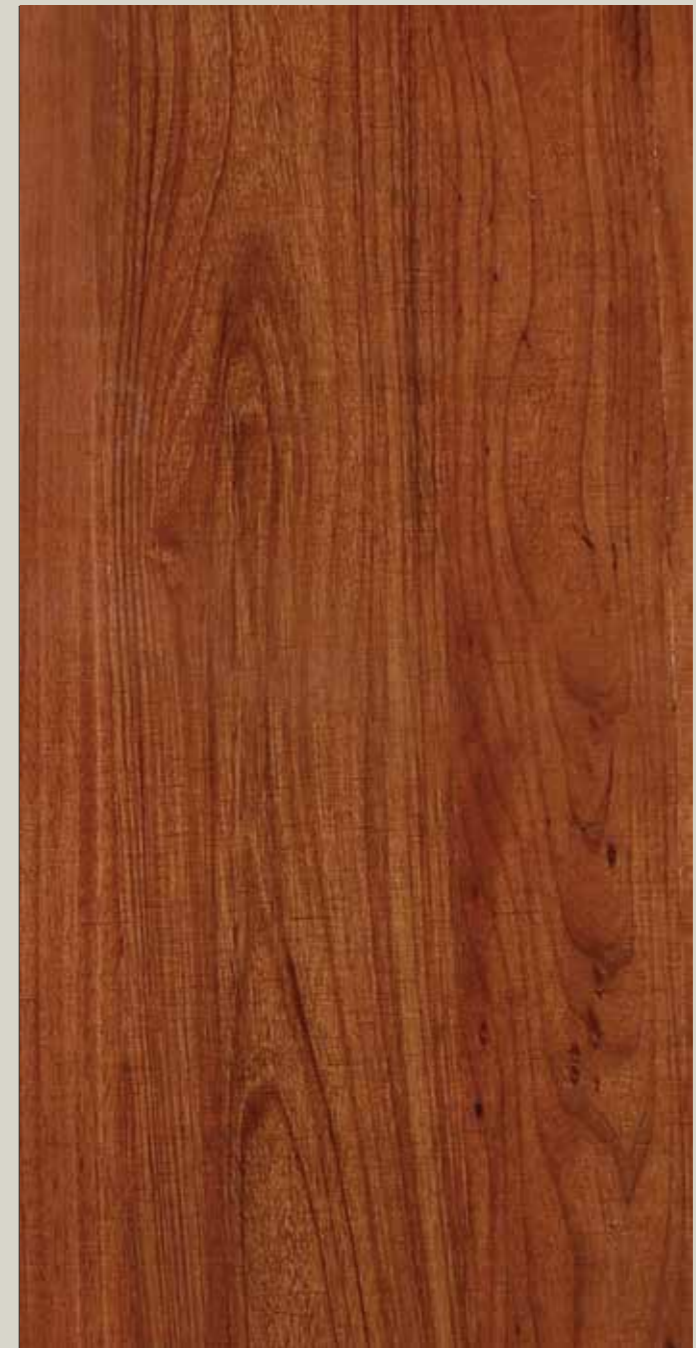
ROASTED GONSALVISE



ROASTED BRUNFERA



ROASTED BRAZILIAN CHERRY
(CR/QR)



ROASTED JEQUITIBA



ROASTED CAPE GUM



ROASTED KNOTTY LARCH



ROASTED ANTIQUE WALNUT



**ROASTED LARCH
(CR/QR)**



ROASTED LARCH ROUGHT CUT



ROASTED MAHOGANY



ROASTED MAKORE



ROASTED MAKORE POMMELI



ROASTED MOTTLED MAKORE



ROASTED CHINA BERRY



ROASTED SHEDUA



ROASTED DRACON EBONY
(CR/QR)



ROASTED PLATANUS CIPHER



ROASTED COCOBOLO
(CR/QR)



ROASTED RED ELM
(CR/QR)



ROASTED SILKY CROMA



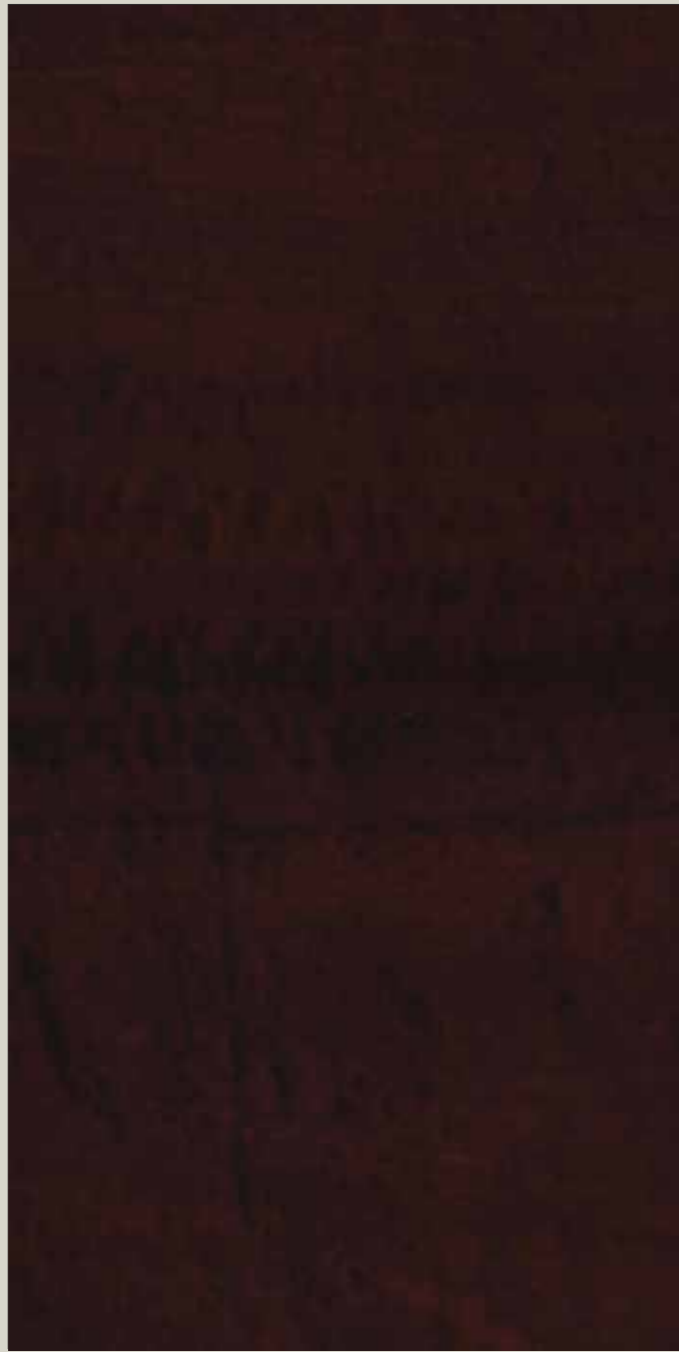
ROASTED BLOND OAK
(CR/QR)



ROASTED SANTOS



ROASTED SAPELE
(QR)



ROASTED SAPELE POMMELI



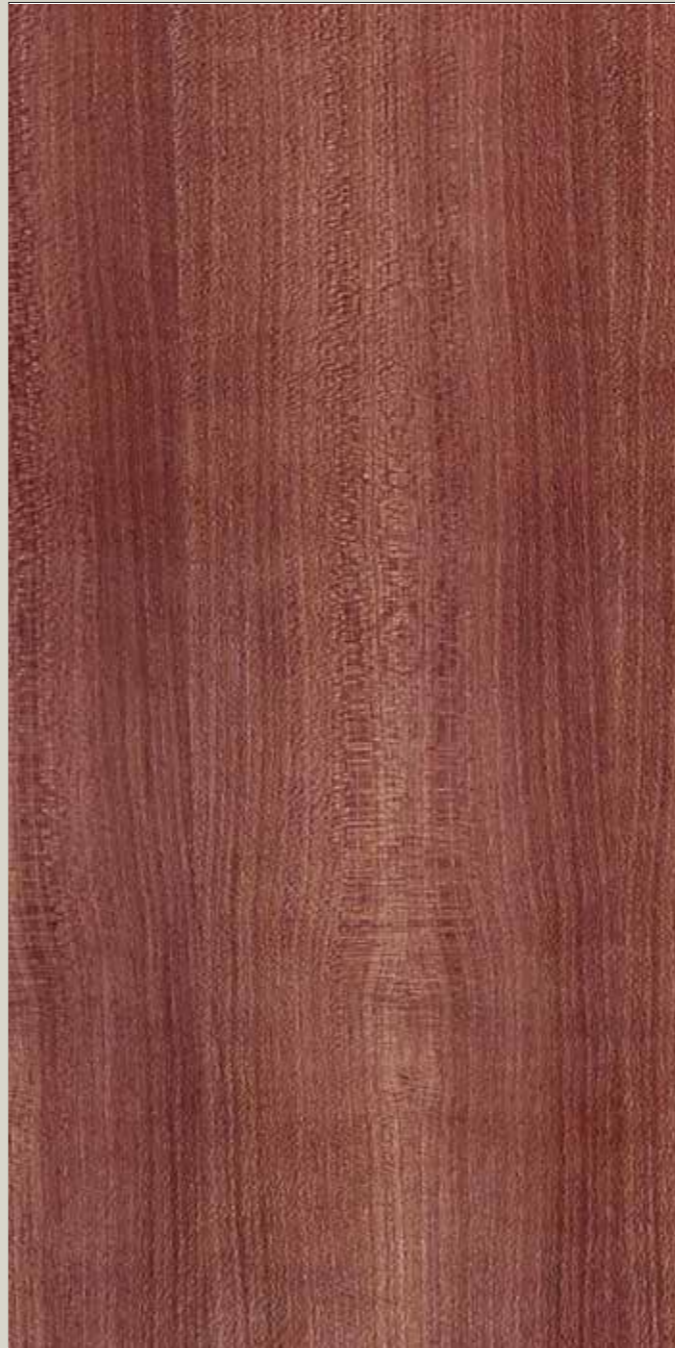
ROASTED SAXIFAGUS



ROASTED NOCINO



ROASTED SANWOOD



ROASTED ROBUSTA OAK



ROASTED ANCIENT OAK



ROASTED WALNUT
(CR)



ROASTED MUSHY WALNUT



ROASTED WALNUT ROUGH CUT



ROASTED NEGRA OAK
(CR/QR)



ROASTED NEGRA OAK ROUGH CUT



ROASTED ZEBARANO
(CR/QR)



ROASTED QUILTED CURUPIXIA



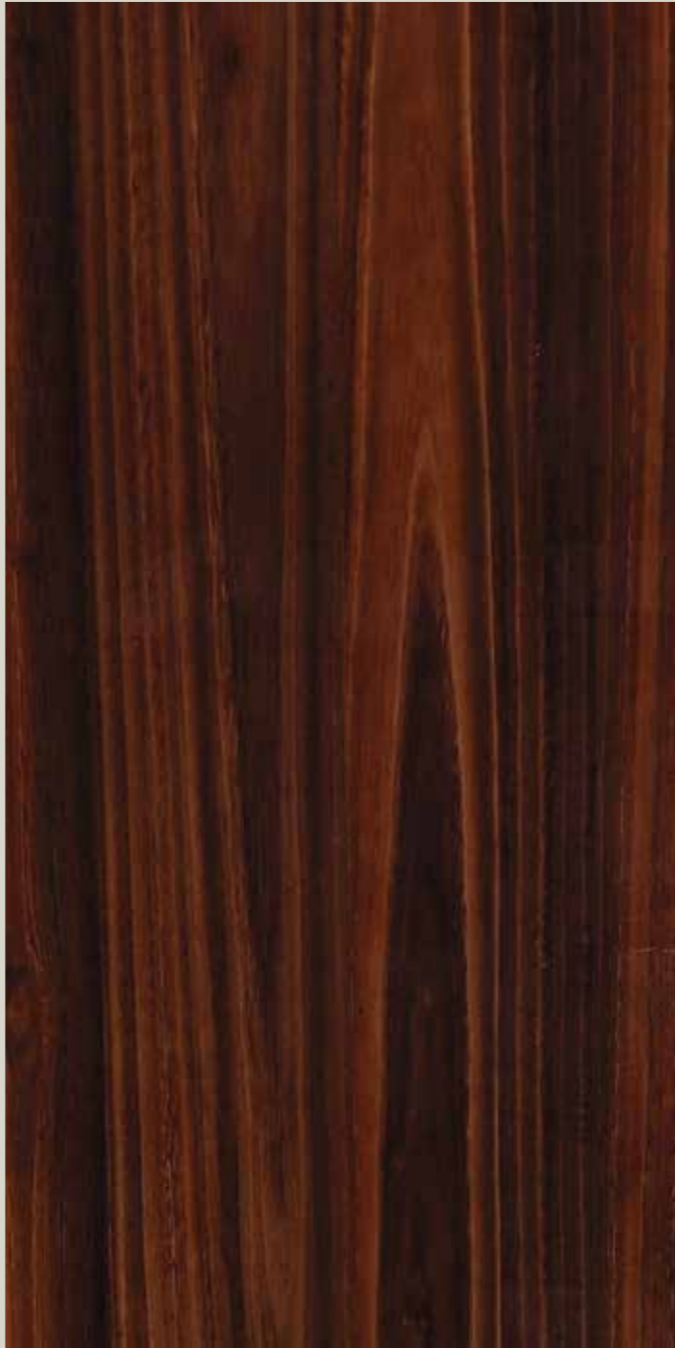
ROASTED SANTALAM



ROASTED PENCAN



ROASTED WALNUT
(QR)



ROASTED EUCALYPTUS
(CR)



ROASTED SAPELE
(CR)



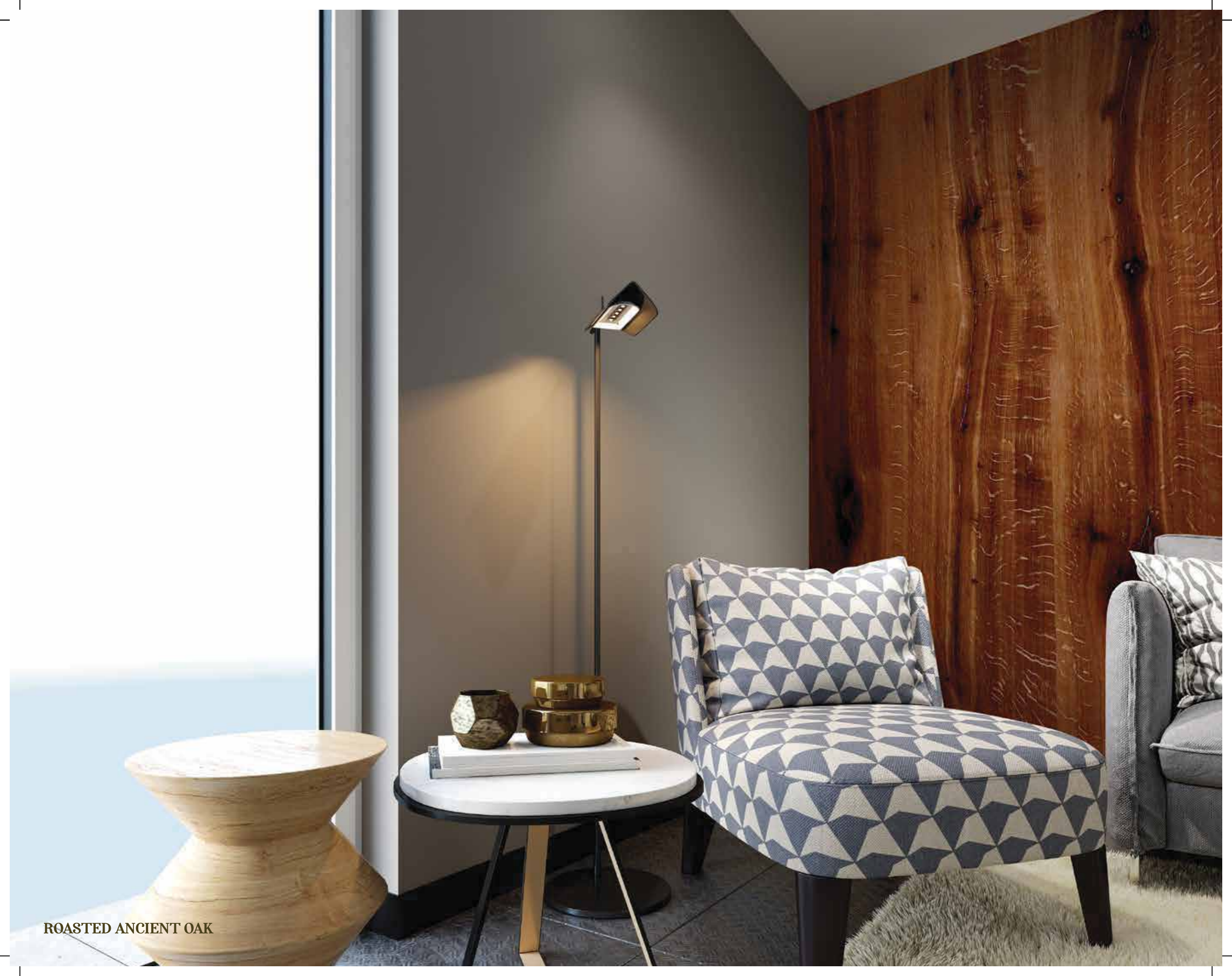
ROASTED SPALTED TAMARIND



ROASTED WALNUT CALIFORNIA



ROASTED SAPELI ROUGH CUT



ROASTED ANCIENT OAK



**ROASTED YAYA
(CR/QR)**



ROASTED PERSIAN ALBERO



ROASTED BLACK CASTANO



ROASTED VALUTINA



ROASTED BONSUM



ROASTED CASTANO



ROASTED CEDRALA TOONA



ROASTED AZADIRA



ROASTED LEBBECK



ROASTED WALNUT JULIUS



ROASTED ODIUM



ROASTED IVORY BOMBAX



ROASTED PARVI FLORA



ROASTED AQUILARIA



ROASTED AILANTHUS

Sterling Solitaire

What is a masterpiece that doesn't dazzle the senses? Looking at a piece of art is like staring at the moon in the night sky - it never gets tiring. The wide array of Sterling Solitaire veneers will have a similar effect on your senses. The veneers undergo a special silver finish, leaving them with a sheen that is sure to dazzle any space.



SOLITAIRE FIGURED SYCAMORE





SOLITAIRE AROMAS JUNIPER
(CR)



SOLITAIRE FRAXINUS ROTATORY



SOLITAIRE FAGUS BOSOM



SOLITAIRE ACER BEM



SOLITAIRE CURLY & QUILTED MAPLE



SOLITAIRE FIGURED ANIGRE



**SOLITAIRE FIGURED ASH
(CR/QR)**



SOLITAIRE FIGURED BOLIVIAN ASH



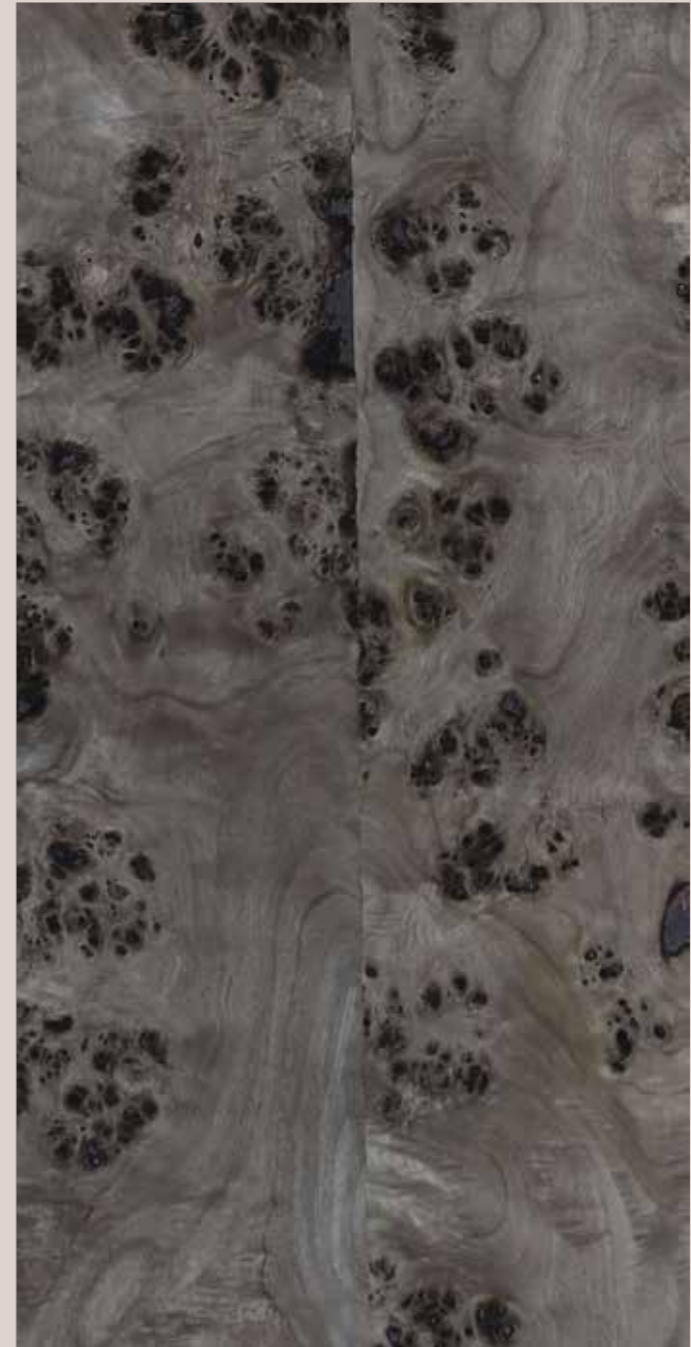
**SOLITAIRE FIGURED SYCAMORE
(CR/QR)**



SOLITAIRE GRISSAD



SOLITAIRE SILKY CROMA



SOLITAIRE MAPA BURL



**SOLITAIRE ACER
(CR/QR)**



**SOLITAIRE BOLIVIAN ASH
(CR/QR)**



SOLITAIRE SAXIFAGUS



SOLITAIRE NOCINO



SOLITAIRE SANWOOD



SOLITAIRE ROBUSTA OAK



SOLITAIRE ACER BEM



SOLITAIRE STEAMED BEECH



**SOLITAIRE SYCAMORE
(CR/QR)**



**SOLITAIRE WHITE ASH
(CR/QR)**



SOLITAIRE WHITE BEECH



SOLITAIRE SENNOKI



SOLITAIRE ALBIZIA



**SOLITAIRE FIG AMERICAN CHERRY
(CR)**



SOLITAIRE BLACK AFARA



SOLITAIRE PISCES BONE



SOLITAIRE FAGUS BOSOM ROUGH CUT



SOLITAIRE BONSUM



SOLITAIRE KERIKASA



SOLITAIRE SCARLET BOMBAX



SOLITAIRE ODIUM



SOLITAIRE SULONGA



SOLITAIRE IVORY BOMBAX

Farbivo Dyed Veneers

Add a fresh stroke of wonder to the canvas of your living space. Transform your domestic plane into a slice of living art with our range of decorative veneers. Farbivo, the latest of the Wood Crests wonders, is a range of dyed veneers with Mediterranean sensibilities. Come, explore the finest Italian craftsmanship, complete with the assurance of continental precision and quality. A brave new world of aesthetic living bids you welcome.





ASH SLATE BLACK



ASH DESERT SAND



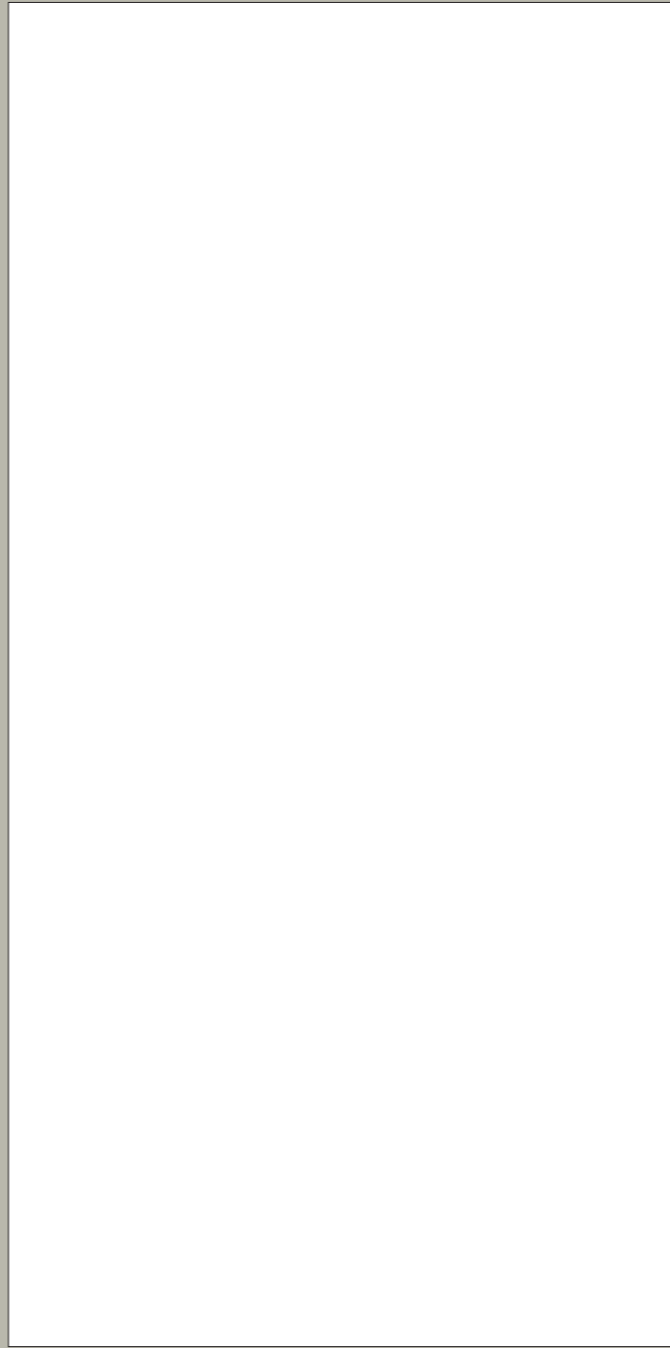
ASH SARDINE GREY



ASH SLATE BLACK



ASH MUSHROOM GREY



ASH PEBBLE GREY



ASH COOL GREY



ASH NEVADA



ASH FRENCH GREY



ASH PEARL-WHITE



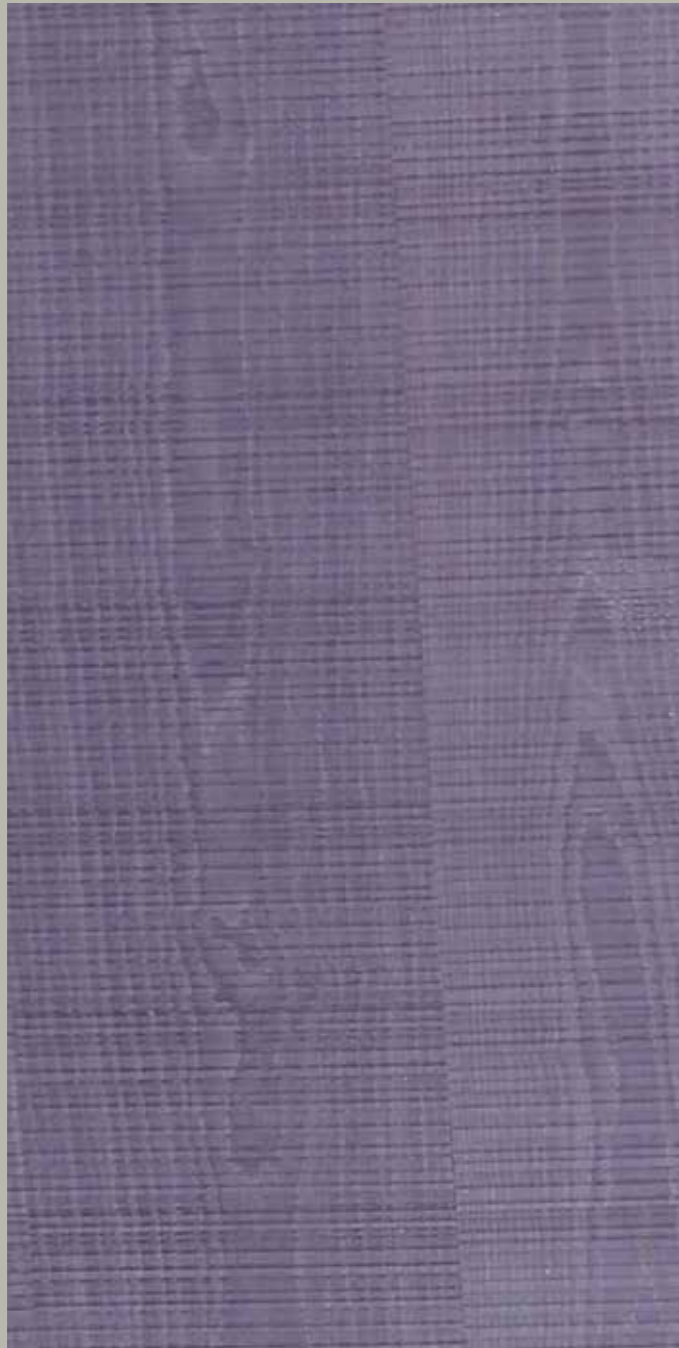
ASH BURL SCORPION



ASH BURL TAUPE



ASH BURL SILVERFOX



ASH SHARK GREY (ROUGH CUT)



OAK SEAL-GREY



OAK HARBOUR GREY



OAK SANDALWOOD



OAK MILKY GREY



OAK MISTY GREY



OAK SPECKED GREY



OAK ROBLE GREY



WENGE ASHEN GREY



WENGE BRUNET GREY



AKO GRIZZLY GREY



AKO ONYX BLACK



KEFE DOLPHIN GREY



KEFE MINK GREY



KEFE TAWNY WHITE



KEFE UMBER BROWN



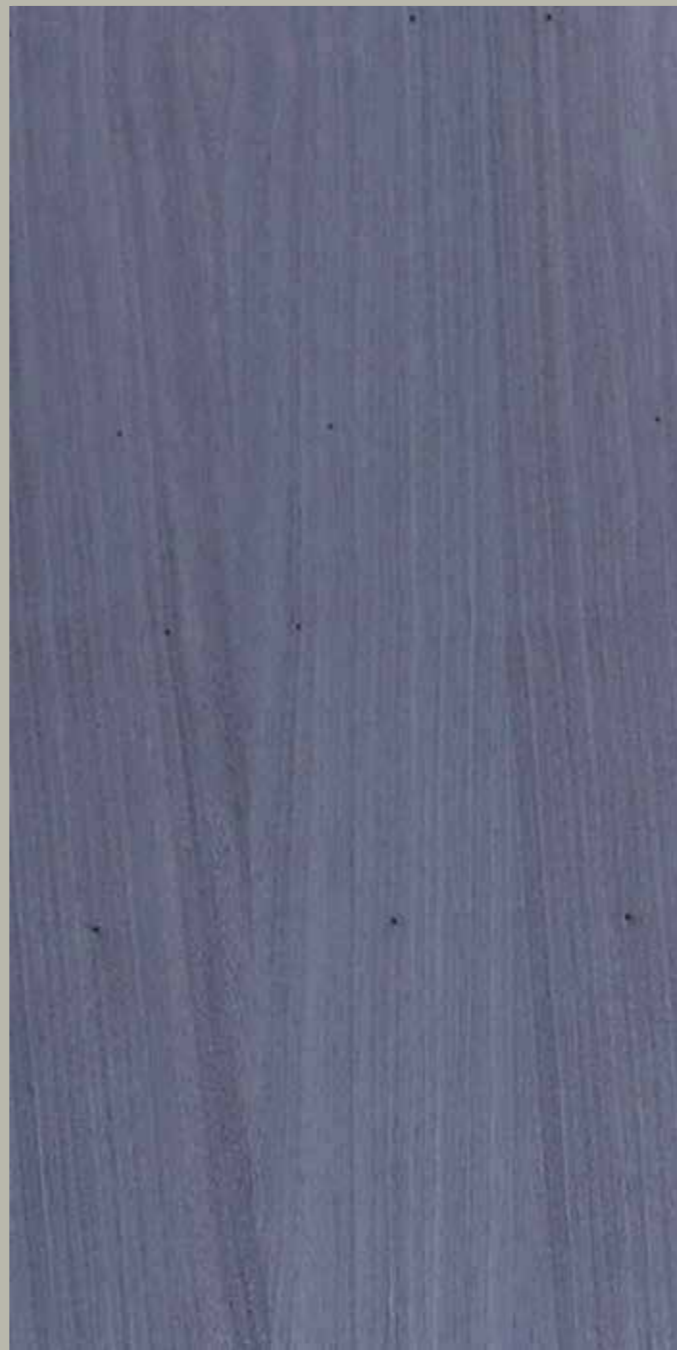
KEFE COFFEE BROWN



KEFE DOVE GREY



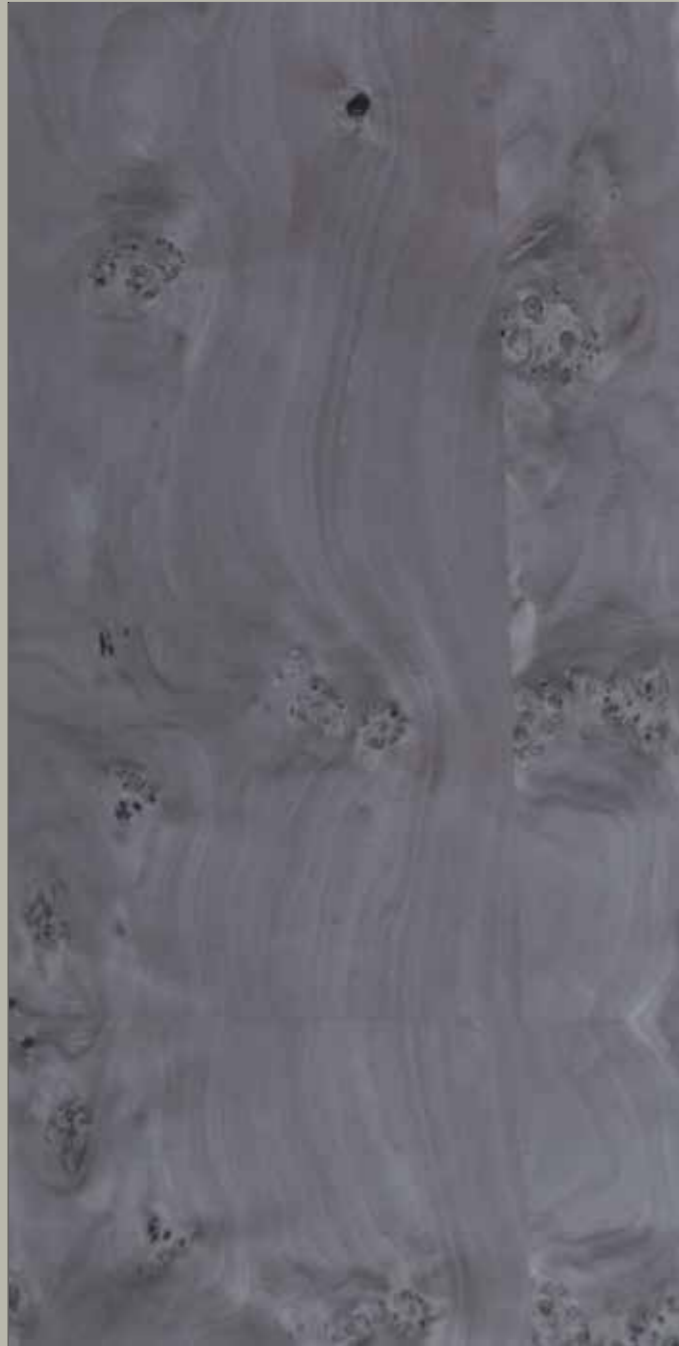
KEFE EBON GREY



KEFE FROSTY GREY



KEFE BUTTERNUT



MAPA BURL ORCHID GREY



LOURO FIRE LAVAGREY

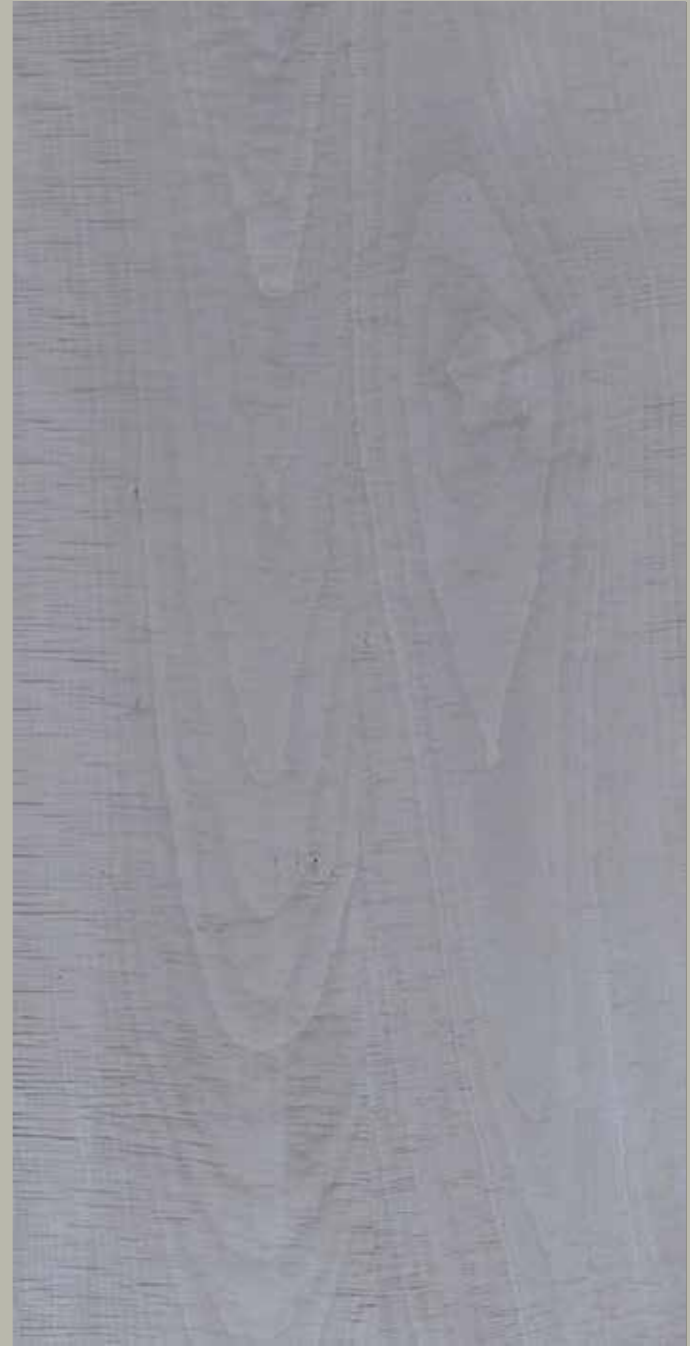


FIG SYCAMORE ABLONE



FIGURED EUCALYPTUS FREEZY GREY



FIGURED EUCALYPTUS MURKY GREY



FIGURED EUCALYPTUS SOMBER GREY



FIGURED EUCALYPTUS COCOA BROWN



FIGURED ANEGRE HUSH GREY



FIGURED ANEGRE TORTILLA BROWN



MAGNOLIA PEWTER GREY



MAGNOLIA CLOUDY GREY



MAGNOLIA SANDALWOOD



MAGNOLIA PEARL RIVER



MAGNOLIA SHADOW GREY



MAGNOLIA ASHY GREY



SUCUPIRA PHOENIX GREY



SUCUPIRA DUSKY GREY



SUCUPIRA OYSTER GREY



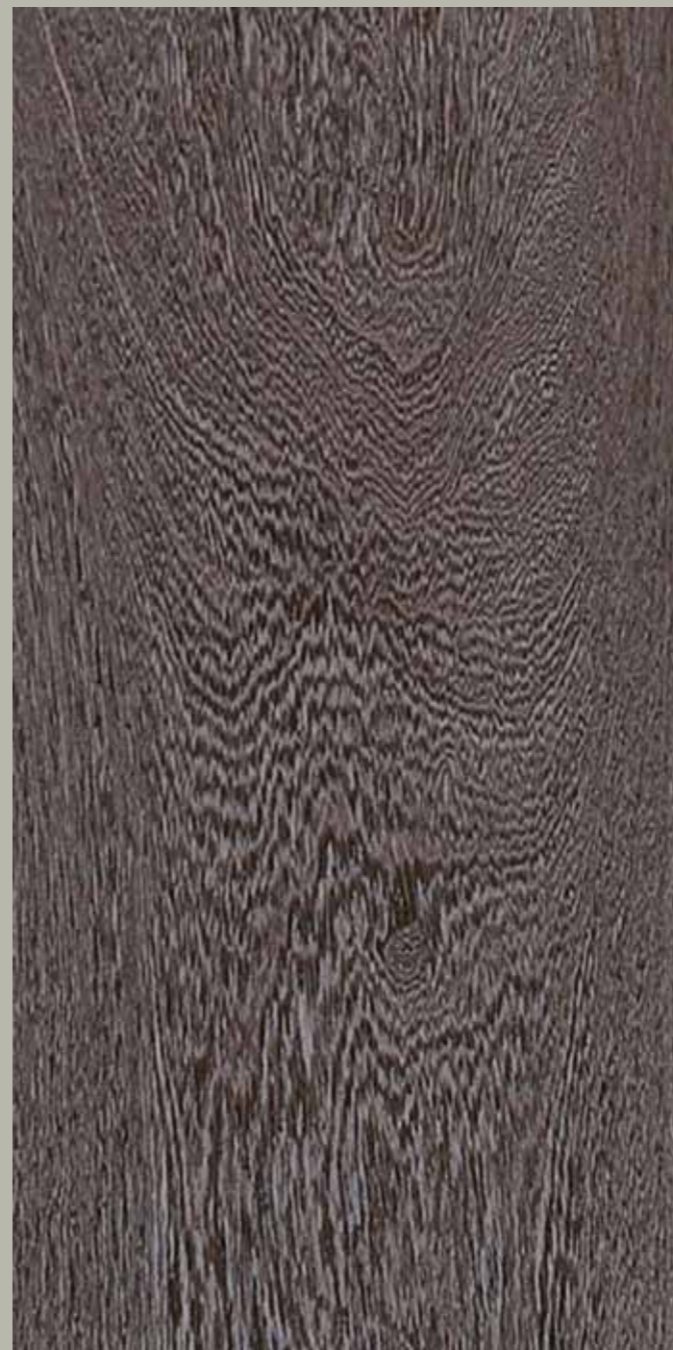
SUCUPIRA HAZEL GREY



SUCUPIRA IMPERIAL GREY



SUCUPIRA TUSCAN GREY



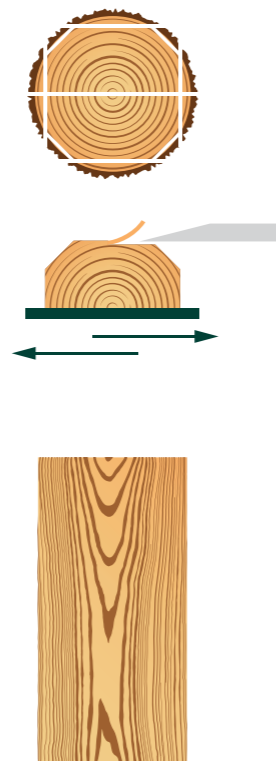
SUCUPIRA HEATHER GREY

VENEER CUTS

The patterns of different kinds of veneers depend on the way a log of a tree is cut during processing. There are several ways to slice veneer. Each method gives rise to a unique grain pattern.

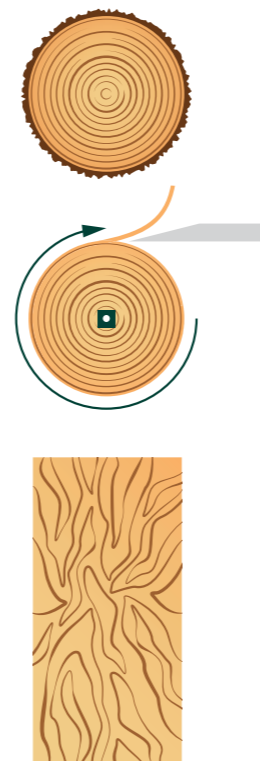
CROWN

When sliced veneer is cut at a tangent, it results in bold sweeping curves and oval shapes in the center, and striped grains along the edges of a leaf.



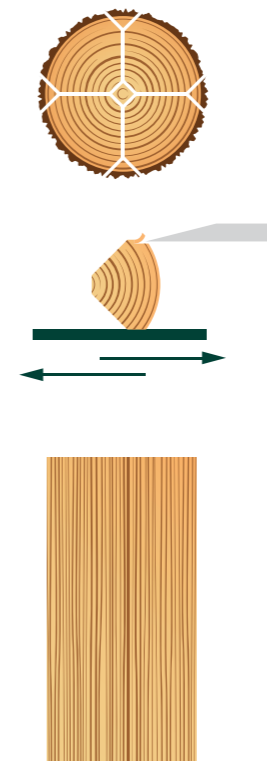
ROTARY

The log is mounted centrally on a lathe and rotated against a knife. The continuous tangential cuts result in distinctive watery or variegated patterns.



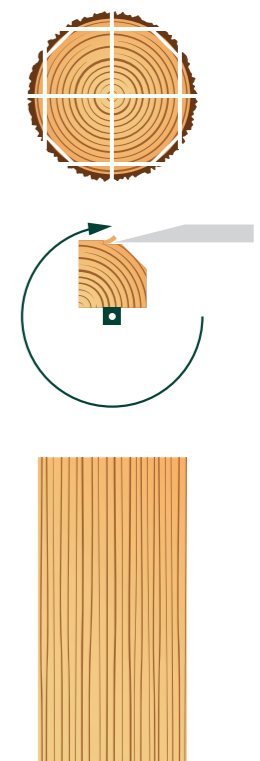
QUARTER

The quarter log is mounted on a metal frame, so that the growth rings of the flitch strike approximately at a right angle, producing a succession of stripes. These stripes are may or may not be uniform across timbers.



RIFT

The rift, or comb-grain effect, is obtained by making minor slices across the medullar rays. This accentuates the vertical grain, and minimizes flaking.



A figure is characterised by its wavy texture. When light falls on the uneven arrangement of fibres, it gets reflected in a way that imparts a look of aesthetic unkemptness to the veneer.

POMELLE

Pomelle is a small to medium sized blister figure. The heavier and more uniform the blister, the more is its value in the market. It is extracted from large species of African trees like Sapele, Bubinga and Makore.



MOTTLED

Mottled is an irregular figure that runs across the surface of the veneer. It is characterised by a wavy and granular spiral pattern that gives veneers their wrinkled look. Mahogany, Sapele and Bubinga trees have a tendency to be mottled.



CROTCH

Crotch comes from the intersection point where the main branch of the tree meets the trunk. It is usually extracted from medium sized species like Mahogany and Walnut.



BURLS

Large, decorative and valuable, Burls resembles a tight cluster of dormant buds. Stunted growth has caused dark piths to run across the length of the buds.



SIZE AVAILABILITY (HEIGHT x WIDTH x THICKNESS)

2440mm x 1220mm x 4mm

Will also be available in 3050mm x 1220mm and 3660mm x 1220mm

FACE VENEER THICKNESS

0.55mm

BASE PLY THICKNESS

3.5mm

BASE PLY TYPE

Keruing/Gurjan (Dipterocarpus)

BIS Standards

IS:1328

PROTECTION FROM BORER/TERMITE

Borer proof, termite resistant

DENSITY

680 Kg/CBM

FLEXI VENEERS (AVAILABILITY)

Yes



Wood crests™

Greenply Industries Limited

'Madgul Lounge', 5th & 6th Floor, 23 Chetla Central Road, Kolkata-700 027, West Bengal, India

T +91 33 30515000 F +91 33 30515010 E marketing.ply@greenply.com

W www.greenply.com / www.askgreenply.com

Toll Free: 1800-103-4050 Whatsapp: 9007755000

Registered Office Makum Road, Tinsukia-786125, Assam, India, Corporate Identity Number L20211AS1990PLC003484

